

March 2004

Simplex, Duplex, Triplex Booster, Sewage, Submersible ....



## Product Description

Eaton's Cutler-Hammer custom Pump Controllers are designed for use in a variety of Industrial, Commercial and Municipal pumping applications from simplex and duplex sequencing operations, to waste water and sewage treatment installations.

All models are designed in-house by our technical support specialists who will design from your existing specifications or work with you to deliver a custom engineered solution for your application.

Approval drawings and quotations are produced within two working days.



## Approvals



N. Y. C.  
APPROVED



## Product Features

### Eaton Cutler-Hammer Components

All Pump Controllers are manufactured using Eaton Cutler-Hammer components such as NEMA rated Freedom starters, oil and dust tight 10250T Series NEMA pushbuttons and HMCP breakers.

### Enclosures

Eaton Cutler-Hammer manufactures a wide variety of enclosures. As well as many standard designs, custom enclosures can be produced to your specifications. Ratings include NEMA 1, 2, 3R, 4, 4X and 12.

### Flexible Production Capabilities

Our independent demand production area allows us to provide single, custom controllers, while our lean manufacturing assembly lines give us the capability to process large volume requests.

### Testing

All custom Pump Controllers are tested in-house by one of our certified test technicians before being packed and shipped.

## Delivery

### Standard Delivery

Standard delivery on all styles of Pump Controllers is 2-3 weeks.

### Flexible

Rush or improved delivery times can be accommodated by contacting Cutler-Hammer.



## Application Support

### Factory Location

The Eaton Cutler-Hammer support team is located in our Pump Controller manufacturing facility, which allows for improved communication and a reduction in errors and delays.

### Territory Assigned

Each technical support Product Specialist is assigned to a specific territory to ensure continuity of efforts.

### Quotations

All requests for quotes are reviewed and processed within 48 hours of receipt.

### Email

Email responses are returned within 24 hours of receipt.

## Field Coverage and Support

### Local Representation

In the United States, Eaton Cutler-Hammer provides local support through our network of Pump Controller factory trained agents.

### Start Up

Each agent is available for local sales and technical support including on-site start up assistance.

### Spare Parts

All Eaton Cutler-Hammer authorized agents have quick access to spare parts for emergency situations.

### Note:

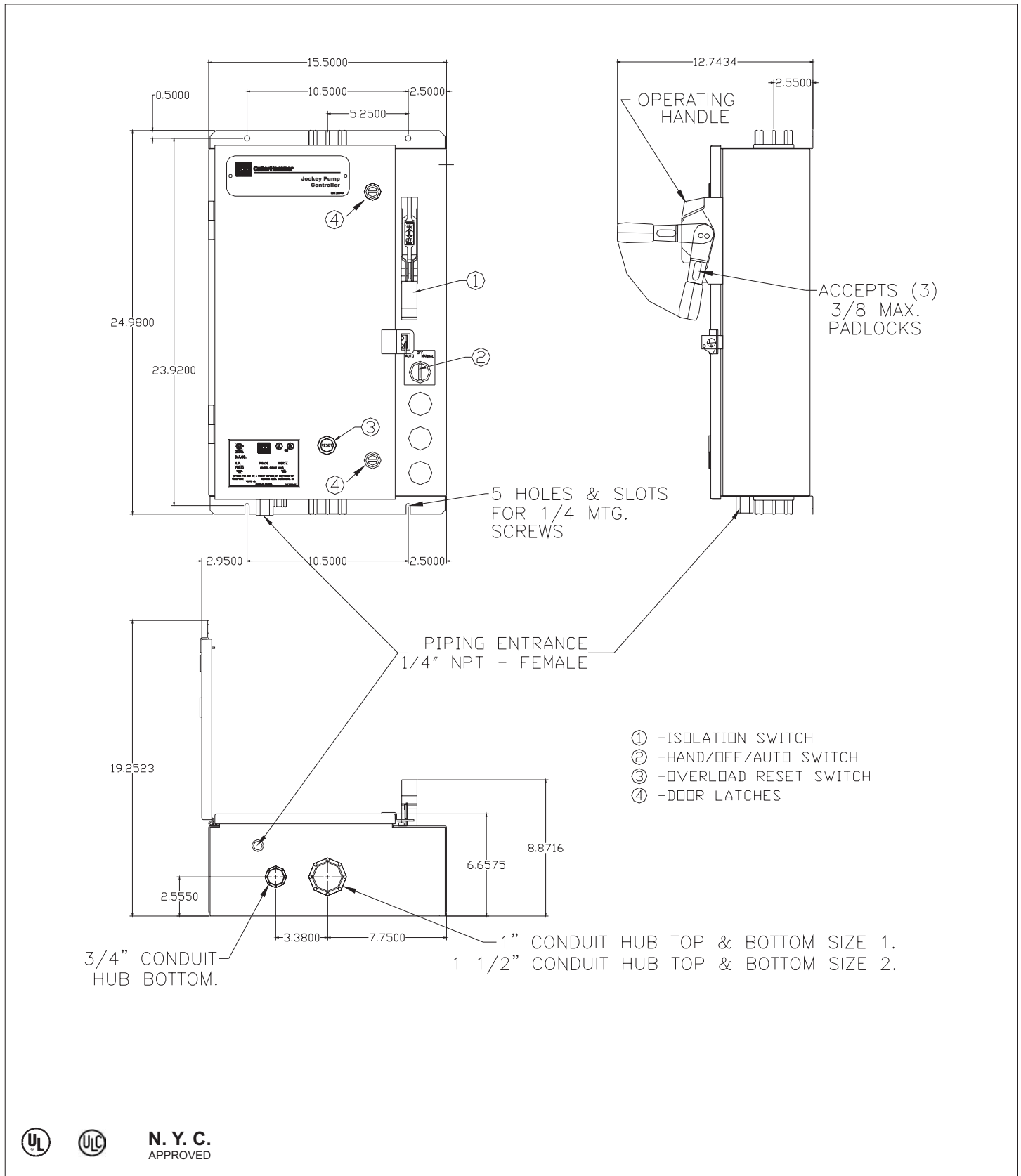
For support in territories where there are no Eaton Cutler-Hammer authorized sales agents, please contact the factory direct.



Simplex, Duplex, Triplex Booster, Sewage, Submersible ....

Dimensions

Standard Enclosure - Type NEMA 2, 3R, 4, 4X, 12

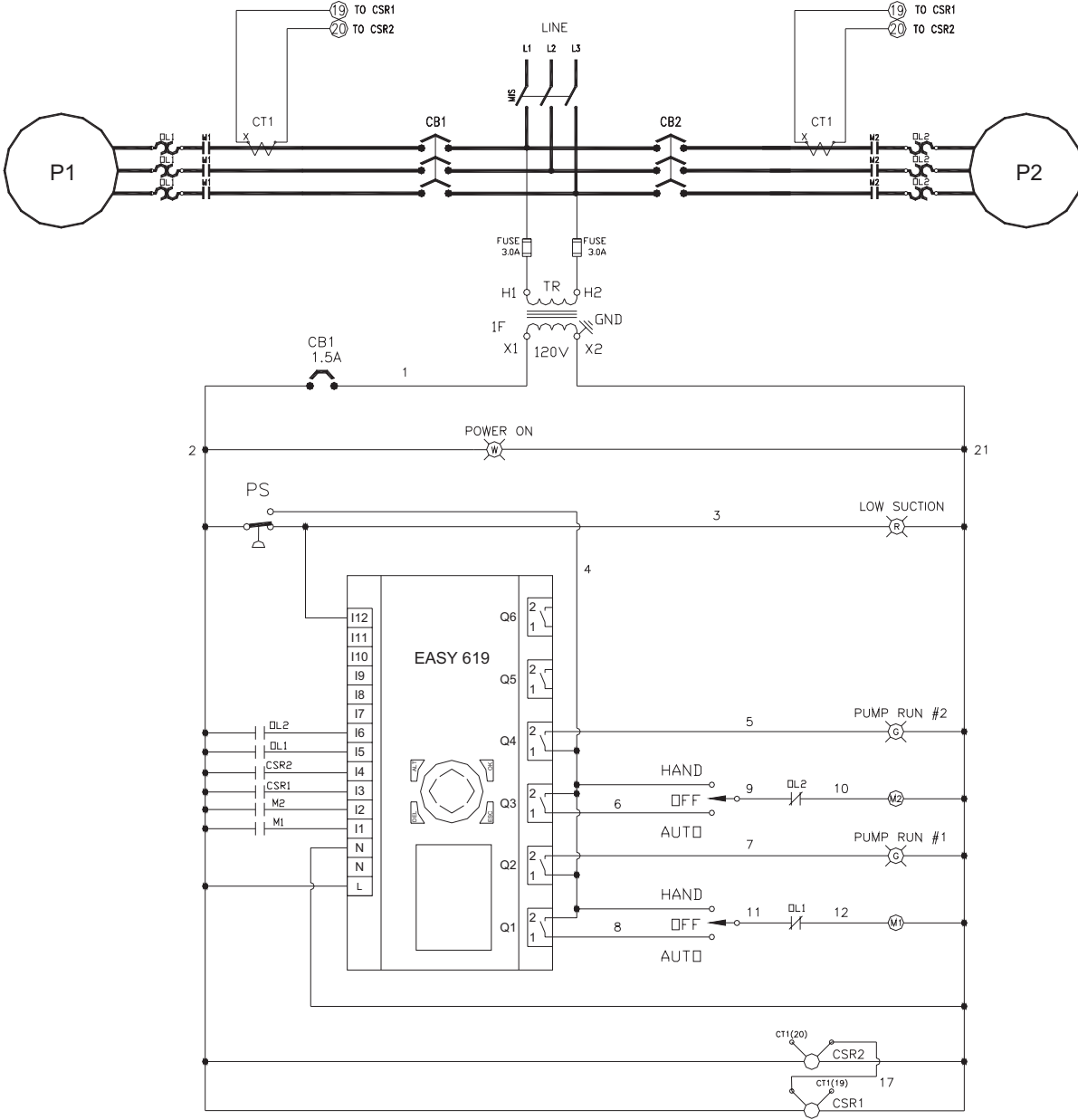


N. Y. C.  
APPROVED

March 2004

Simplex, Duplex, Triplex Booster, Sewage, Submersible ....

Electrical Wiring Schematic  
Booster Pump Controller - CURRENT Sensing



LEGEND

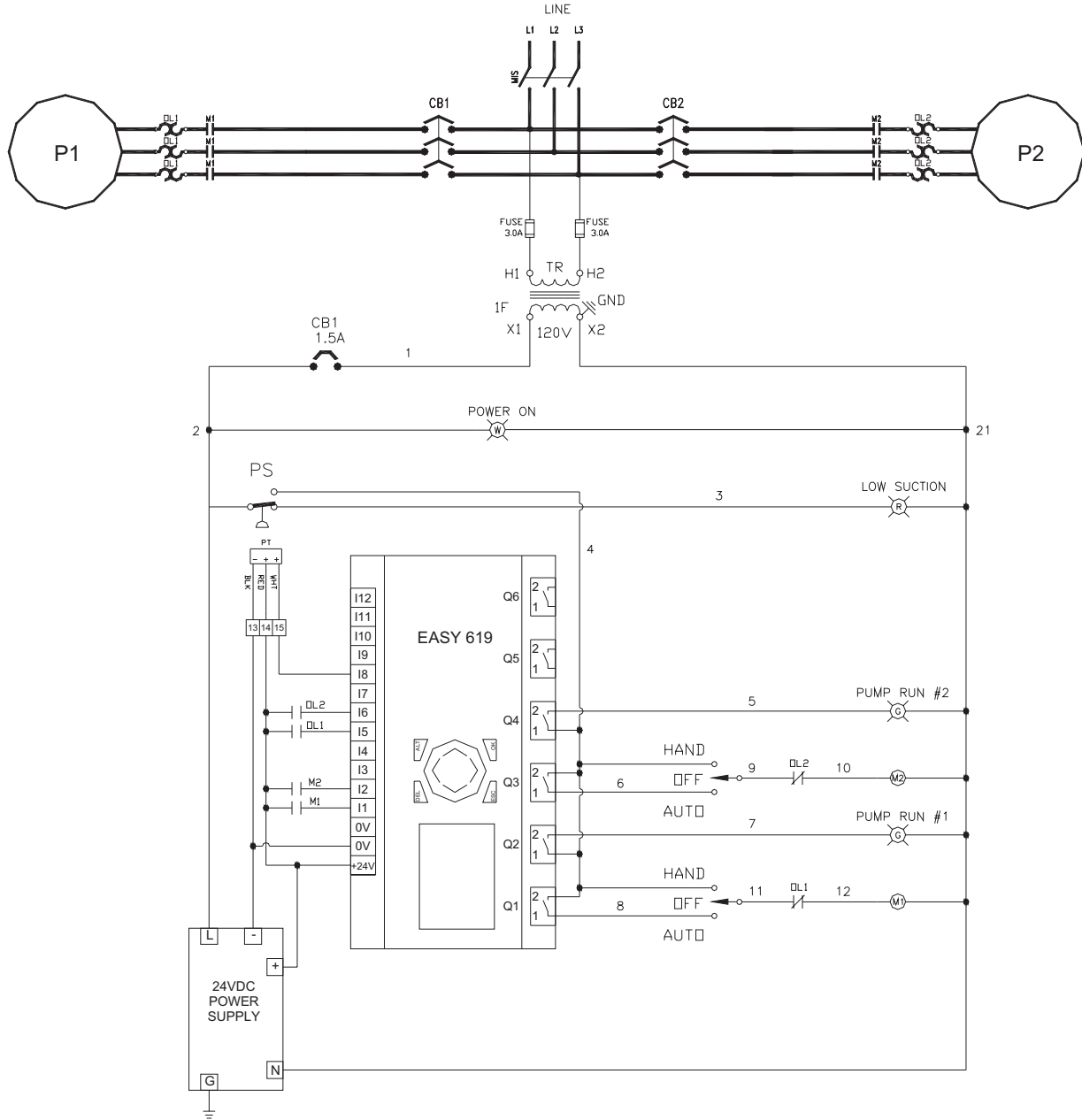
OL1, OL2	- MOTOR PROTECTORS	CSR1, CSR2	- CURRENT SENSING RELAY
CT1	- CURRENT TRANSFORMERS		
M1, M2	- CONTACTORS		
CB1, CB2	- CONTROL CIRCUIT BREAKER		
L1, L2, L3, L4	- PILOT LIGHTS		
EASY 619	- CONTROL RELAY		
PS	- PRESSURE SWITCH		

50/50 Split



Simplex, Duplex, Triplex Booster, Sewage, Submersible ....

**Electrical Wiring Schematic**  
**Booster Pump Controller - PRESSURE Sensing**



LEGEND

OL1, OL2	- MOTOR PROTECTORS
PT	- PRESSURE TRANSDUCER
M1, M2	- CONTACTORS
CB1, CB2	- CONTROL CIRCUIT BREAKER
L1, L2, L3, L4	- PILOT LIGHTS
EASY 619	- CONTROL RELAY
PS	- LOW SUCTION PRESSURE SWITCH

50/50 Split



N. Y. C.  
APPROVED